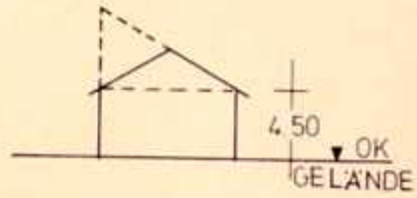
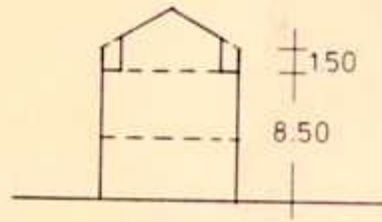


BAUWEISE:

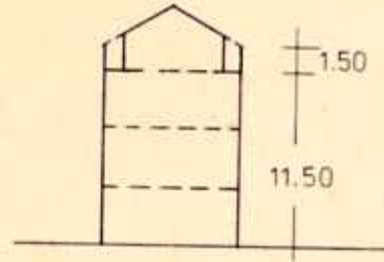
E+D - SATTEL - ODER PULTDACH
20° - 35°



E+I+D - SATTELDACH 20° - 35°



E+II+D - SATTELDACH 20° - 35°



GA - SATTEL - ODER FLACHDACH
(DACHNEIGUNG WIE HAUPTGEBÄUDE)

