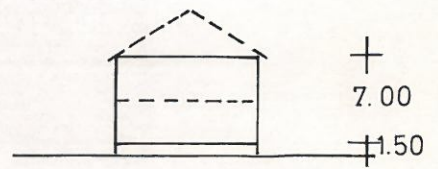


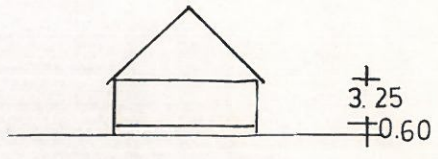
II - (II) - SATTELDACH IM (WA) U. (MI)
25 - 30°

(WA) 5.50 (MI) 5.50
±0.60 ±1.10

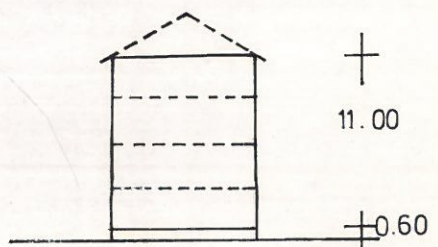
II - FLACH ODER SATTELDACH
IM (GE) 25 - 30°



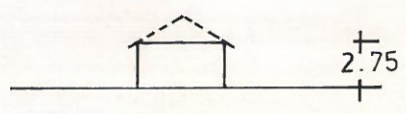
E/D - SATTELDACH 43 - 48°



(IV) - FLACH ODER SATTELDACH
25 - 30°



Ga - FLACH ODER SATTELDACH (DACH-
NEIGUNG WIE HAUPTGEBÄUDE)



DER